

# ALAMEDA COUNTY ARTS COMMISSION PUBLIC ART PROGRAM

## MISSION BOULEVARD CORRIDOR IMPROVEMENT PROJECT Public Art Project Cherryland & Ashland

Informational Presentation by the  
Alameda County Arts Commission staff  
September 2025





The **Alameda County Arts Commission** is a division of the County of Alameda. The Arts Commission supports all art forms and creative expression such as music, drama, dance, theater, visual, traditional, new media, etc. The activities of the Arts Commission are based on the belief that arts, culture and creativity are essential to our successful and thriving community.

## PROGRAM AREAS



ADVOCACY



CREATE



ARTSFUND



PUBLIC ART

# ALAMEDA COUNTY ARTS COMMISSION PUBLIC ART PROGRAM

## Public Art Project for Mission Boulevard Corridor Improvement Project

### Overview

The Alameda County Arts Commission manages the County's Public Art Program which presents artworks in County buildings and in outdoor spaces throughout the unincorporated areas of Alameda County. The goal of the Public Art Program is to provide positive art experiences for the community.

The Alameda County Arts Commission is partnering with the Alameda County Public Works Agency on a public art project for the Mission Boulevard Corridor Improvement Project in Ashland and Cherryland.

The Mission Boulevard Corridor Improvement Project is a continuation of the Alameda County Public Works Agency's E. 14<sup>th</sup> Street / Mission Blvd corridor improvements. Phase Two of the County's revitalization project includes the Ashland and Cherryland Community Identifier by artist Nico Berry and the public artwork along E. 14th Street in Ashland by artist Miriam Klein Stahl.

# ALAMEDA COUNTY ARTS COMMISSION PUBLIC ART PROGRAM

## Public Art Project for Mission Boulevard Corridor Improvement Project

### Artist Selection Process & Activities

2022-24: Alameda County Arts Commission staff worked with Alameda County Public Works Agency on the overall Public Art Program Plan.

Dec 2024: Members of the Alameda County Public Art Advisory Committee and Members of the Alameda County Arts Commission approve the Public Art Program Plan.

Jan-March 2025: Community Outreach about Artist Selection Committee and Community Survey.

March: Artist Selection Committee was formed.

May 11, 2025: Presentation to the Eden Area Municipal Advisory Council.

May 26, 2025: Presentation to Alameda County Board of Supervisors' Unincorporated Services Committee

# ALAMEDA COUNTY ARTS COMMISSION PUBLIC ART PROGRAM

## Public Art Project for Mission Boulevard Corridor Improvement Project

### Artist Selection Committee

The Artist Selection Committee members for this project are:

- Diane Curry, Community Representative
- Michael Freed, Artist and Community Representative
- Lani Llamido, Artist and Community Representative
- Sandhya Nath, Artist and Community Representative
- Cindy Torres, Community Representative
- Ashley Strasburg, non-voting, advisory member representing County Supervisor Nate Miley

Additionally, the following individuals provided feedback during the first phase of artist selection and also outreach to the Spanish-speaking community:

- Angelica Canchola, Community Representative
- Rosemary Vazquez, Community Representative

# ALAMEDA COUNTY ARTS COMMISSION PUBLIC ART PROGRAM

## Public Art Project for Mission Boulevard Corridor Improvement Project

### Artist Selection Process & Activities

April 16, 2025: The Artist Selection Committee met and reviewed the Artist Project Pool of 46 artists, which was formed using the Alameda County Artist Registry. The Committee selected six artists to be the semifinalists for this project: David Burke (Oakland), Sean Griffin (Oakland), Olivia Losee-Unger (Oakland), John Osgood (Danville), Kim Vanderheiden (Castro Valley), and Patricia Wakida (Oakland).

May 14, 2025: Members of the Alameda County Arts Commission approve the semifinalist artists.

May 15, 2025: Arts Commission staff conduct orientation meeting with semifinalist artists.

June 12, 2025: Community Roundtable at the Cherryland Community Center co-hosted with the Cherryland Community Association. Over 30 community members attended as well as the semifinalist artists.

July-August 2025: Artwork proposals were available both online and in-person for community members to provide feedback. Proposal displays were available at the Cherryland Community Center, REACH Ashland Youth Center and Meek Mansion Open Day. The information was available in both English and Spanish.

# ALAMEDA COUNTY ARTS COMMISSION PUBLIC ART PROGRAM

## Public Art Project for Mission Boulevard Corridor Improvement Project

### Artist Selection Process & Activities

August 5, 2025: 2<sup>nd</sup> Artist Selection Committee meeting. Semifinalists present their proposal and are interviewed by Selection Committee. Artist Sean Griffin and his artwork proposal are recommended for this project by the Selection Committee.

September 2025: Arts Commission conducts community outreach regarding selected artist and proposal.

- Sept 9: Eden Area MAC endorses the Selection Committee's recommendation of selected artist.
- Sept 18: Presentation of selected artist to the Cherryland Community Association.

Sept 10, 2025: Approval of recommended artist by the appointed members of the Alameda County Arts Commission.

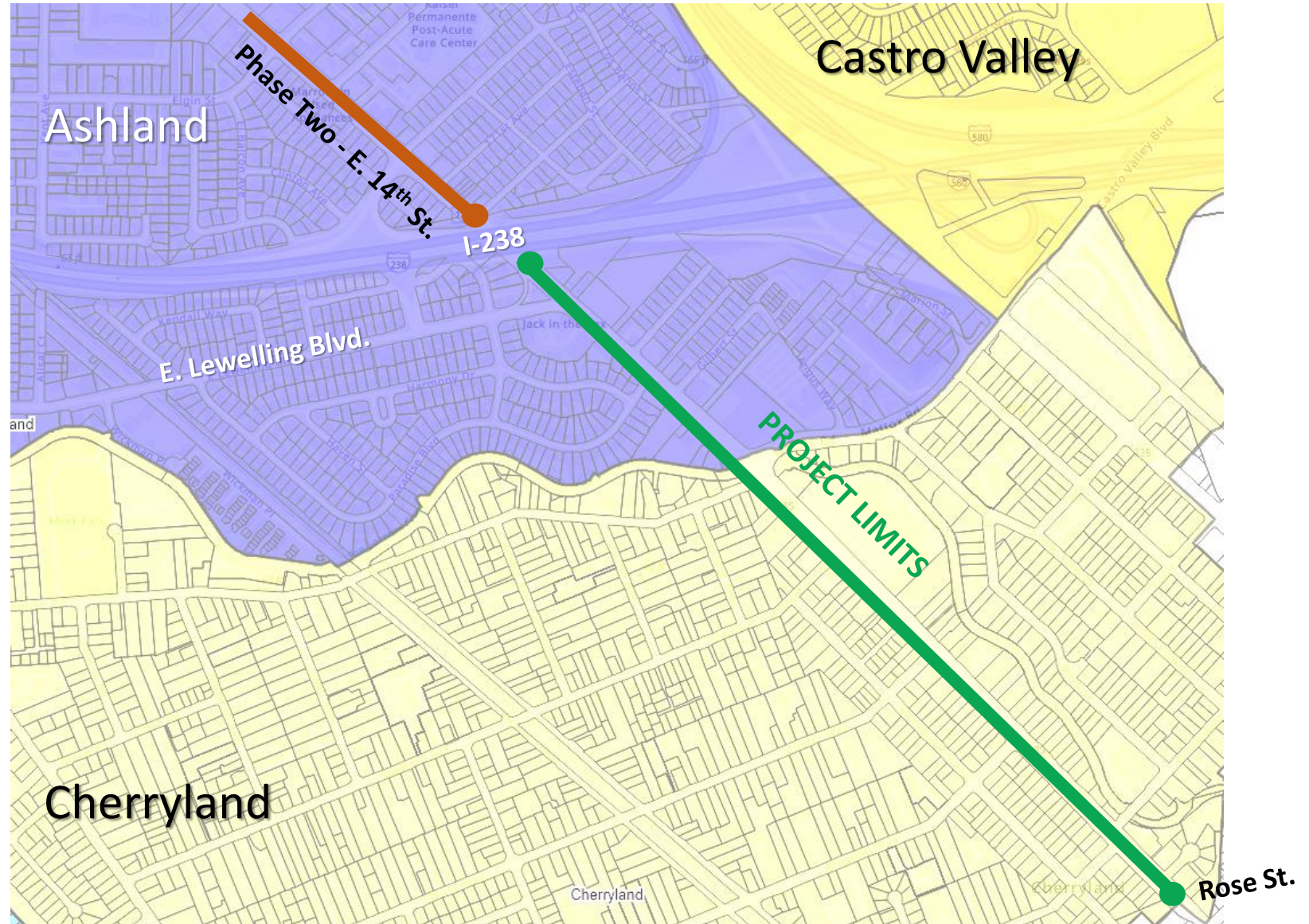
Nov 2025: Artist's contract will be presented to the Alameda County Board of Supervisors for approval.



# ALAMEDA COUNTY ARTS COMMISSION PUBLIC ART PROGRAM

## Public Art Project for Mission Boulevard Corridor Improvement Project

The current project extends along Mission Boulevard in the unincorporated communities of Ashland and Cherryland from I-238 to the Hayward City limit at Rose Street.





# ALAMEDA COUNTY ARTS COMMISSION PUBLIC ART PROGRAM

## Public Art Project for Mission Boulevard Corridor Improvement Project

### Public Art Project Overview

The project is a continuation of the Alameda County Public Works Agency's E. 14<sup>th</sup> Street / Mission Blvd corridor improvements. Phase Two of the County's revitalization project includes the Ashland and Cherryland Community Identifier by artist Nico Berry and the public artwork along E. 14th Street in Ashland by artist Miriam Klein Stahl.

For continuity, the public artwork will maintain a similar approach to the artwork along the E. 14<sup>th</sup> St corridor. A **new artist** will be hired to create **new designs** for this phase of the project. The selected artist will develop new themes and imagery in their own style and color palette.

### Permanent Art Elements (Quantities are approximate)

- Cut Metal Art Panels in the Street Medians (15 designs, 29 panels)
- Cut Metal Pedestrian Barriers (3 designs for panels with approx. 760 linear feet)
- Artwork integrated into Bench Seating (Qty: 5 sets of designs for back and side panels of each bench with 52 benches)

### Designs for Temporary Street Enhancements (Approximately 16 designs total)

- Utility Box Wraps (Qty: Approx. 8 designs)
- Street Light Pole Art Banners (Qty: Approx. 8 designs)

# ALAMEDA COUNTY ARTS COMMISSION PUBLIC ART PROGRAM

## Public Art Project for Mission Boulevard Corridor Improvement Project

### Public Art Elements - Cut Metal Art Panels in Medians



*Image of E. 14<sup>th</sup> Street with Cut Metal Art Panels by artist Miriam Klein Stahl.*

#### Mission Blvd Project

Qty: 15 designs, 29 panels

Two panel sizes: 4'H x 6'W and 4'H x 3'-6"W.

Materials: Laser cut aluminum panels installed in a structural frame.

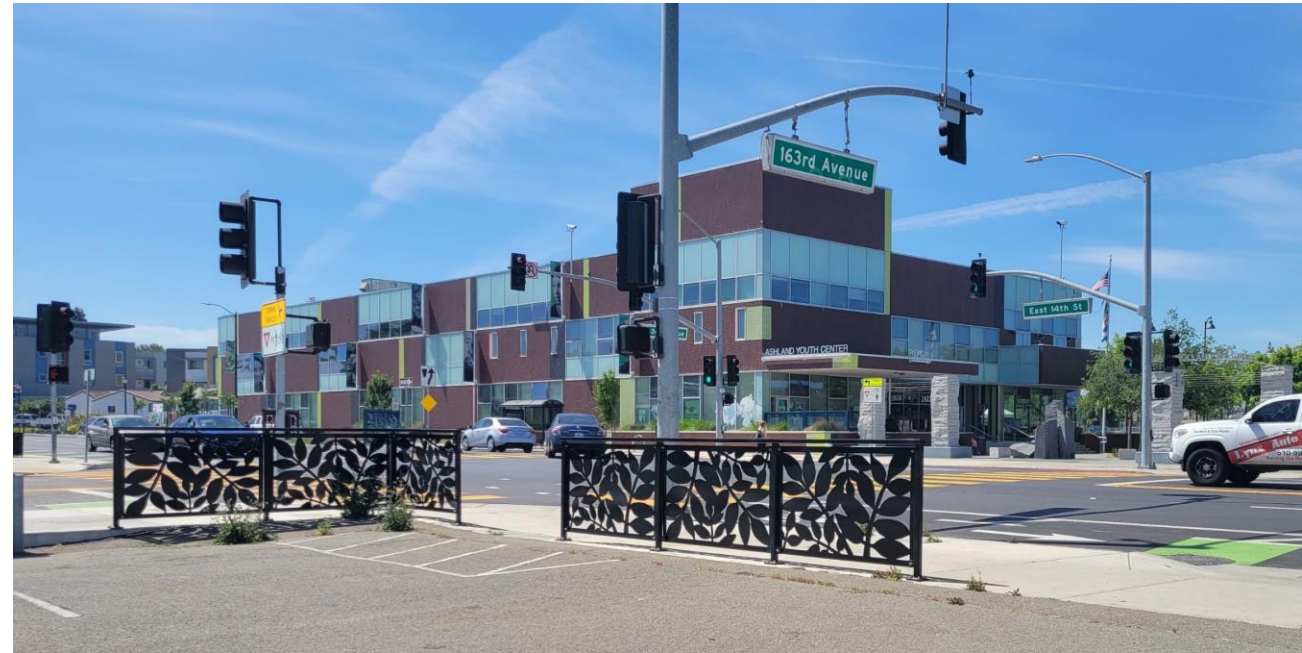
Finish: Carboline high-performance coating.



# ALAMEDA COUNTY ARTS COMMISSION PUBLIC ART PROGRAM

## Public Art Project for Mission Boulevard Corridor Improvement Project

### Public Art Elements – Cut Metal Pedestrian Barriers



*Image of E. 14<sup>th</sup> Street with Cut Metal Art Panels by artist Miriam Klein Stahl.*

#### Mission Blvd Project

Qty: 3 designs for panels, approx. 760 linear feet.

Panel size: 36"H x 57.5"W

Materials: Laser cut steel panels installed in a structural frame.

Finish: Powder coated, one color throughout project.



# ALAMEDA COUNTY ARTS COMMISSION PUBLIC ART PROGRAM

## Public Art Project for Mission Boulevard Corridor Improvement Project

### Public Art Elements – Benches



Benches have a middle arm rest.

#### Mission Blvd Project

Qty: 5 sets of designs for back and 2 side panels. 52 benches.

Bench size: 6' wide. Back Panel size: 15.5" H x 69" W

Materials: Galvanized steel panels.

Finish: Powder coated, one color with approximately 5 colors throughout project.



# ALAMEDA COUNTY ARTS COMMISSION PUBLIC ART PROGRAM

## Public Art Project for Mission Boulevard Corridor Improvement Project

### Public Art Elements – Utility Box Wraps



#### Mission Blvd Project

Qty: 8 designs.

Size of front panel: 78" H x 45" W (approx.) – Final designs will be on all 4 sides of box.

Materials: Vinyl wrap & anti-graffiti laminate.

*Images of E. 14<sup>th</sup> Street Utility Box Wraps with designs by artist Miriam Klein Stahl.*



# ALAMEDA COUNTY ARTS COMMISSION PUBLIC ART PROGRAM

## Public Art Project for Mission Boulevard Corridor Improvement Project

### Public Art Elements – Art Banners



*Images of E. 14<sup>th</sup> Street Streetlight Pole Art Banners designs by artist Miriam Klein Stahl.*

#### Mission Blvd Project

Qty: 8 designs.

Size: 90" H x 23" W (approx.)

Materials: Banner material.



# ALAMEDA COUNTY ARTS COMMISSION PUBLIC ART PROGRAM

## Public Art Project for Mission Boulevard Corridor Improvement Project

### **Recommended Artist:**

Sean Griffin

### **Artwork Description:**

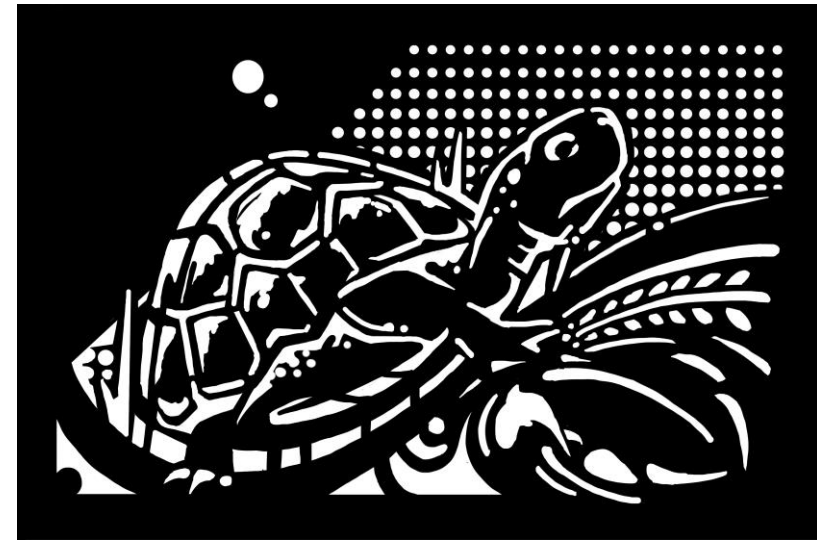
Artist Sean Griffin's public art proposal celebrates the natural beauty and community of Cherryland and Ashland. His artwork images feature the area's plants, animals, gardens, agricultural past, and the San Lorenzo Creek. The designs will be implemented as cut metal panels on the street medians and integrated into benches and pedestrian safety barriers placed along Mission Boulevard. Additional imagery based on the overall theme will be featured on utility box art wraps and streetlight pole art banners. The overall theme of the artwork is interconnection, growth, and harmony.

# ALAMEDA COUNTY ARTS COMMISSION PUBLIC ART PROGRAM

## Public Art Project for Mission Boulevard Corridor Improvement Project

### 3 Designs for Cut Metal Art Panels in Street Medians

Each cut-metal design tells a layered story, with foreground, middle ground, and background elements that create depth and visual movement. The designs feature cherries hanging from a branch, a monarch butterfly landing on native milkweed, and a turtle. Completed project will have 15 designs. Anticipated total number of Metal Panels: 29. Each panel size: 4' H x 6' W.



*Note: The black areas of the design represent the solid parts of the metal panels. The white areas of the design represent the open areas of the metal panels. The finish colors of the metal will be determined at a later date.*

Artwork copyright the artist.



# ALAMEDA COUNTY ARTS COMMISSION PUBLIC ART PROGRAM

## Public Art Project for Mission Boulevard Corridor Improvement Project

### Design for Cut Metal Pedestrian Barriers

Panel design features cherry orchards fading into the horizon, paired with a close-up of cherries, in recognition of the community's name and agricultural history. Design shown side-by-side and flipped horizontally to illustrate future installation concept. Completed project will have 3 designs. Anticipated total quantity of Pedestrian Barriers: 760 linear feet. Each panel size: 3' H x 4'9" W.



*Note: The black areas of the design represent the solid parts of the metal panels. The white areas of the design represent the open areas of the metal panels. The finish colors of the metal will be determined at a later date.*

Artwork copyright the artist.

# ALAMEDA COUNTY ARTS COMMISSION PUBLIC ART PROGRAM

## Public Art Project for Mission Boulevard Corridor Improvement Project

### Design for Cut Metal Pedestrian Barriers

Panel design focuses on interwoven fruit tree branches and native birds. Design shown side-by-side and flipped horizontally to illustrate future installation concept. Completed project will have 3 designs. Anticipated total quantity of Pedestrian Barriers: 760 linear feet. Each panel size: 3' H x 4'9" W.



*Note: The black areas of the design represent the solid parts of the metal panels. The white areas of the design represent the open areas of the metal panels. The finish colors of the metal will be determined at a later date.*

Artwork copyright the artist.



# ALAMEDA COUNTY ARTS COMMISSION PUBLIC ART PROGRAM

## Public Art Project for Mission Boulevard Corridor Improvement Project

### Design for Cut Metal Bench Seat Back

Bench seat back design features the San Lorenzo Creek, one of the region's historical natural resources, essential to the local ecosystem. Completed project will have 5 sets of designs with back and sides.

Anticipated total quantity of benches: 52. Each back rest panel size: 16" H x 69" W.



*Note: The black areas of the design represent the solid parts of the metal panels. The white areas of the design represent the open areas of the metal panels. The finish colors of the metal will be determined at a later date.*

Artwork copyright the artist.

# ALAMEDA COUNTY ARTS COMMISSION PUBLIC ART PROGRAM

## Public Art Project for Mission Boulevard Corridor Improvement Project

### Designs for Utility Box Wraps and Art Banners

Additional imagery based on the overall theme will be featured on utility box art wraps and art banners.



Artwork copyright the artist.

# ALAMEDA COUNTY ARTS COMMISSION PUBLIC ART PROGRAM

## Public Art Project for Mission Boulevard Corridor Improvement Project

### More Information

For questions about the Alameda County Arts Commission Public Art Program and this project, please visit [arts.acgov.org/public-art-updates](https://arts.acgov.org/public-art-updates) or email [artscommission@acgov.org](mailto:artscommission@acgov.org).

For questions about the Alameda County Public Works Agency and the Mission Boulevard Corridor Improvement Project, please visit [acpwa.org](https://acpwa.org).

